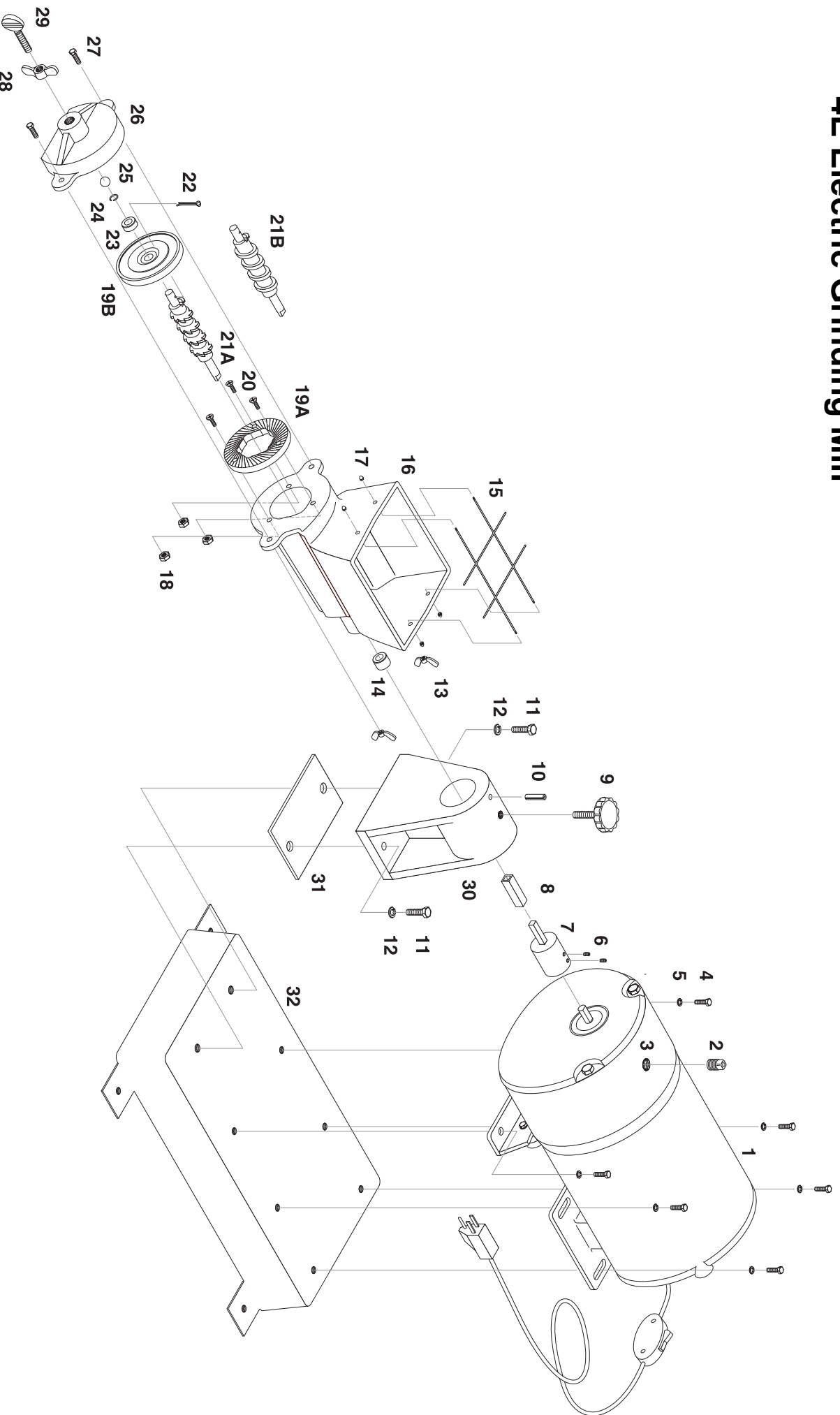


4E Electric Grinding Mill



4E 115V ELECTRIC GRINDER EXPLODED VIEW PARTS LIST

ITEM No.	Description	QCG Part Number	Price
1	115V 60HZ Gearmotor	1 S-4E-1-6TB	
2	Oil Vent Plug	1 OIL_VENT_01	
3	Oil Plug Seal	1 OIL_PLUG_01	
4	Bolt for Base	6 NB_QCG_OO5	
5	Lockwasher for Base	6 NB_QCG_OO6	
6	Socket Set Screw	2 NB_QCG_OO7	
7	Motor Shaft Adaptor	1 S-E60	
8	Square Tubular Coupling	1 S-E59	
9	Plastic Knob	1 S-E58	
10	Roll Pin	1 S-E69	
11	Bolt for Bearing Support	2 NB_QCG_OO3	
12	Lockwasher for BS	2 NB_QCG_OO4	
13	Wing Nut	2 S-E63	
14	Bronze Bushing	1 S-E67	
15	Safety Guard Grid	1 S-E66	
16	Grinding Head Body	1 S-E57	
17	Safety Guard Push Nut	4 S-E66A	
18	Plate Nuts	3 NB_QCG_001 / S-F48	
19A	Stationary Plate Fine	1 S-4B	
19A	Stationary Plate Coarse	1	
19B	Revolving Plate Fine	1	
19B	Revolving Plate Coarse	1	
20	Plate Screws	3 NB_QCG_001 / S-F48	
21A	Tooth Feed Arbor	1 S-E02	
21B	Worm Feed Arbor	1 S-E02-1/2W	
22	Cotter Pin	1 S-F50	
23	Plate Collar	1 S-F23	
24	Retaining Ring	1 S-F16	
25	Steel Ball	1 S-F13	
26	Case Cover	1 S-E03-1/2X_P	
27	Bolt for Wing Nut	2 S-E63	
28	Jam Nut Lever	1 S-F15	
29	Temper Screw	1 S-E14	
30	GH Bearing Support	1 S-E52	

31		Shim Base Plate	1	SHIM_001		
32		Electric Mill Base	1	S-E51		
1-800-755-2879 To Order Spare Parts						