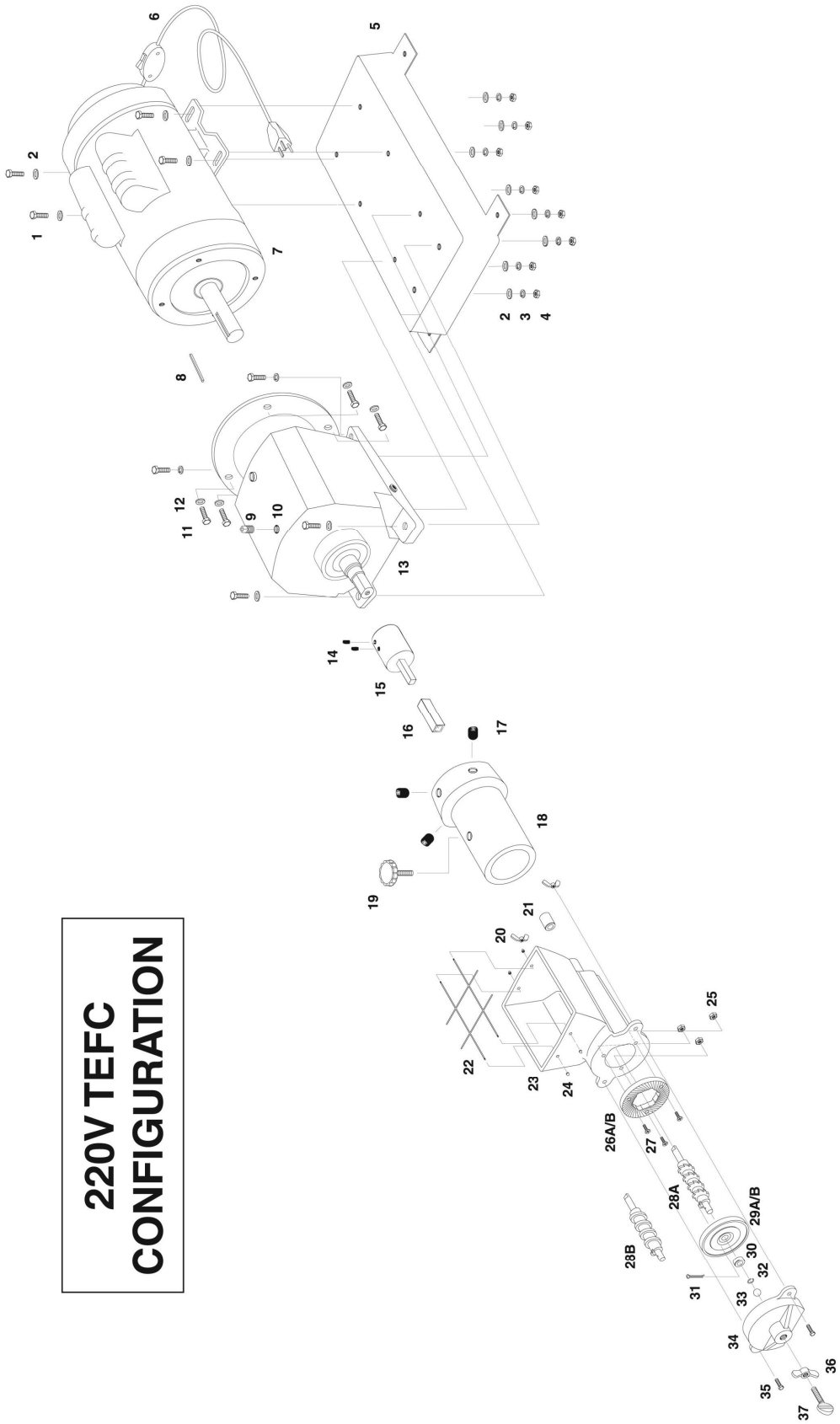


220V TEFC CONFIGURATION



4E 220V ELECTRIC GRINDER EXPLODED VIEW PARTS LIST

ITEM No.		Description		QCG Part No.		Price
1		Motor Bolt 1/4-20 X 3/4	4	NB_QCG_017		
2		Motor Washer 1/4"	4	NB_QCG_ASS_001		
3		Motor Lock Washer 1/4"	4	NB_QCG_OO6		
4		Motor Nut 1/4-20	4	NB_QCG_009_2		
5		Base 220V Mill	1	S-E51_02		
6		220V 50 Hz Switch and Cord	1	S-E64		
7		220V 50 Hz Motor	1	S-E53-2-6		
8		Motor Shaft Key 3/16 X 3/16	1	NB_QCG_023		
9		Oil Vent Plug	1	S-E53VP		
10		Oil Plug Seal	1	Not Pictured		
11		C-Face Bolts 3/8-16	4	NB_QCG_003		
12		C-Face Lock Washer 3/8"	4	NB_QCG_004		
13		Gear Drive	1	S-4E_220GEARBOX		
14		Socket Set Screw	2	NB_QCG_OO7		
15		Motor Shaft Adaptor	1	S-E60		
16		Square Tubular Coupling	1	S-E59		
17		Gear Adapter Set Screw	3	NB_QCG_022		
18		Gear Drive Adapter	1	S-E52		
19		Plastic Knob	1	S-E58		
20		Wing Nut	2	S-E63		
21		Bronze Bushing	1	S-E67		
22		Safety Guard Grid	1	S-E66		
23		Grinding Head Body	1	S-E57		
24		Safety Guard Push Nut	4	S-E66A		
25		Plate Nuts	3	S-F48		
26	A	Fine Stationary Plate	1	S-4B		
26	B	Coarse Stationary Plate	1	S-4CS		
27		Plate Screws	3	S-F48		
28	A	Tooth Feed Arbor	1	S-E02		
28	B	Worm Feed Arbor	1	S-E02-1/2W		
29	A	Fine Revolving Plate	1	S-4B		

29	B	Coarse Revolving Plate	1	S-4CS		
30		Plate Collar	1	S-F23		
31		Cotter Pin	1	S-F50		
32		Retaining Ring	1	S-F16		
33		Steel Ball	1	S-F13		
34		Case Cover	1	S-E03-1/2X_P		
35		Bolt for Wing Nut	2	S-E63		
36		Jam Nut Lever	1	S-F15		
37		Temper Screw	1	S-E14		

1-800-755-2879 To Order Spare Parts